



PLUTEGO

LED LUMINAIRE: ENERGY-SAVING AND ROBUST

PLUTEGO, a recessed and surface-mounted luminaire, is extremely impact-resistant (4x IK10). Making this luminaire highly suitable for environments where impact resistance is required. Applications include public transport stations, parking garages, underpasses and tunnels, but also penal institutions, police stations, sports facilities and schools. This multi-functional luminaire designed for use as a recessed or angled luminaire has two standard lengths. Linear lighting is an option. The PLUTEGO reduces energy consumption and maintenance costs.

Application areas



STATION AREAS



CAR PARKS



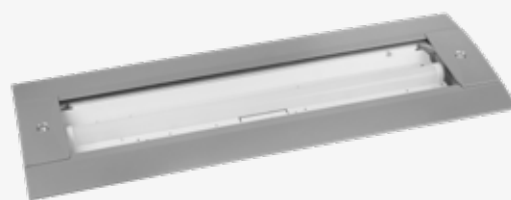
TUNNEL AND
UNDERPASSES



PRISONS



SPORT FACILITIES



Features



IP 65

4 x IK 10

CE

ENEC+



OPTIONS

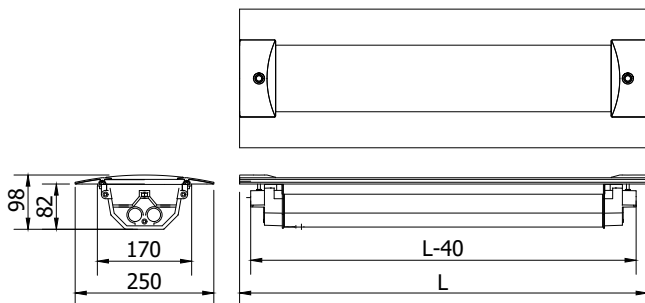


PRODUCT SPECIFICATIONS

- Aluminium housing double coated, grey (RAL 9007)
- Light cover 4 mm UV-stabilised polycarbonate, clear
- Standard closure with hexagonal socket screw
- Assembly, installation and maintenance friendly
- Voltage 230/240 V, 50 HZ
- CRI: >80
- Colour temperature neutral white (4000K)
- Expected lifespan 100.000 hours at
T environment = 25°C (L80/F10)
- Including RVS mounting brackets

DIMENSIONS PLUTEGO

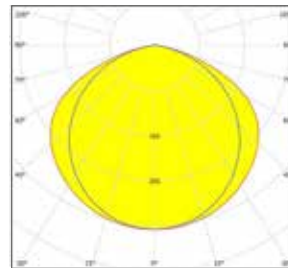
in mm



OPTIONS

- Colour temperature warm white (3000K)
- Smartscan
- 1-10V / Dali
- Control phase
- Constant Lumen Output (CLO)
- Constant Current
- Safety class II
- Emergency lighting (from L 1345 mm)
- Night light
- Other RAL colour
- Anti-graffiti coating
- Security screw: JVA 3-pin
- Key for JVA 3-pin
- Security screw: HSS
- Key for security screw HSS
- Double mounting brackets for linear lighting

CLEAR



Lightronics supplies its fixtures standard as Easy Light with a fixed lumen output.



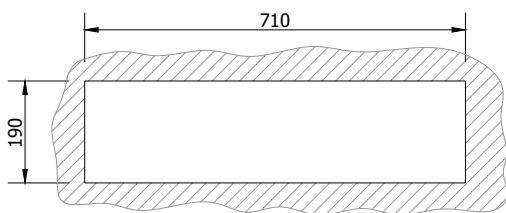
The smart lighting system SmartScan optimises the use of luminaires in your environment. Thanks to wireless communication, there is always sufficient light when required and energy is saved.

PLUTEGO LUMEN LED				
LUMEN LED	HOUSING	SIZE L (MM)	LED-POWER (W)	SYSTEM POWER (W)
1100	2	735	5,9	7,7
1300	2	735	6,9	8,9
1600	2	735	8,7	10,7
1800	2	735	9,7	11,9
2000	2	735	11,1	13,4
2200	2	735	12,1	14,5
2500	2	735	14,3	16,7
2800	2	735	16,0	18,4
3100	2	735	17,7	20,3
3400	2	735	19,9	22,7
3600	2	735	21,2	24,0
3600	4	1345	19,5	22,4
3900	4	1345	21,6	24,8
4400	4	1345	24,2	27,5
5000	4	1345	28,5	31,7
5500	4	1345	31,1	34,6
6000	4	1345	34,5	38,3
6500	4	1345	38,0	41,7
7000	4	1345	40,6	44,5
7500	4	1345	44,1	48,2
8000	4	1345	46,8	51,2

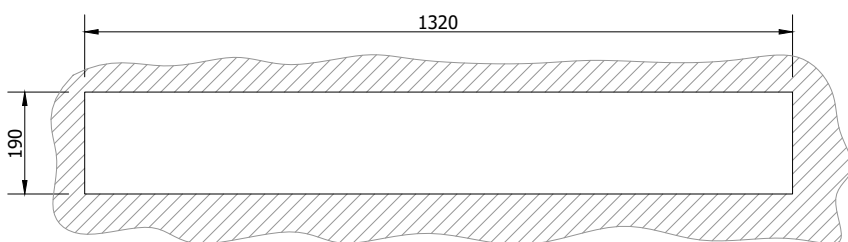
CUT-OUT

in mm

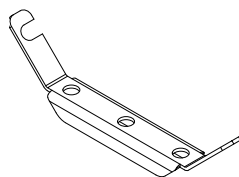
Cut-out for installation housing 2



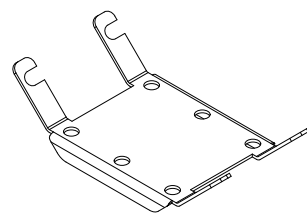
Cut-out for installation housing 4



UNIVERSAL BRACKET



Universal Bracket
(MO733011)

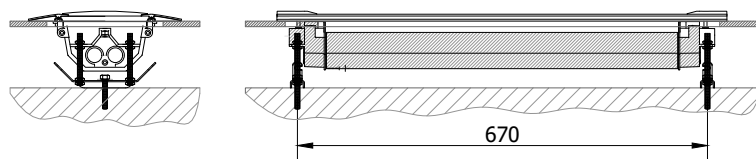


Double Universal Bracket
(MO733012)

DRILLING DISTANCE

in mm

Drilling distance for mounting brackets housing 2



Drilling distance for mounting brackets housing 4

